

AMP1006000-50W

Product Features

- Frequency range from 100 ~ 6000MHz for 10-200M bandwidth
- Class AB GaN design
- Instantaneous wide bandwidth
- 50 Ohm Input/Output impedance
- Small size and Light weight
- High reliability and Ruggedness
- Ultra-wide digital interference source

Description

The AMP1006000-50W-28V is designed for general purpose. Operating frequency range is from 100~6000MHz,Customize any 10-200 MHz bandwidth.Gallium Nitride on GaN Technology is used and attached on a copper sub carrier.Improved thermal handling by patented technology.

Electrical Specifications @ $V_{DC}=24-32V$ (Wide voltage input) , $T_C=50^{\circ}C$, 50 Ω System

PARAMETER	UNIT	MIN	TYP	MAX	SYMBOL
Operating Frequency range	MHz	100	-	6000	F_O
Operating Bandwidth	MHz	-	150	-	BW
Peak Output Power @CW Signal	W	-	50	-	P_{SAT}
Input Power	dBm	-	-	-	P_{IN}
Maximum Input Power @Without Damage	dBm	-	-	-	$P_{IN, MAX}$
Power Gain @Input Power 0dBm	dB	-	47 \pm 3	-	G_P
Gain Flatness @Input Power 0dBm	dB	-	-	± 1	ΔG_P
Efficiency	%	50	52	55	E_{FF}
Harmonics 1 to N @Output Power 50W	dBc	12	13	15	H_N
Spurious Level	dBc	60	-	-	Spur
Input VSWR	dB	-	-	-	VSWR
Output VSWR	dB	-	-	2:1	VSWR
Operating Voltage	V	24	28	32	V_{DC}
Current Consumption @Output Power50W	A	-	2.8	-	I_{DC}

Environmental Specifications

PARAMETER	UNIT	RATING	SYMBOL
Operating Case Temperature	$^{\circ}C$	-20 ~ 85	T_C
Storage Temperature	$^{\circ}C$	-40 ~ 105	T_{STG}
Relative Humidity(Non-condensing)	RH	95	%

AMP1006000-50W

Operating Voltages

PARAMETER	UNIT	NOMINAL VOLTAGE	VOLTAGE ACCURACY	SYMBOL
Operating Voltage	V	24-32	± 2%	V _{DC}
HPA Enable Voltage	V	5-32		V _{DC}
Current Monitor Voltage	V	-		
Temp Monitor Voltage	V	-		

Mechanical Specifications

PARAMETER	UNIT	TYP
Mass	kg	0.16
Dimension	mm	111.7 x37.2 x 18.0 (Without Connectors)
RF Connector	-	MCX Female : RF Input
		SMA : RF Output
DC Connector	-	Power Line, Male : Supply
Cooling		External Heat-sink Required

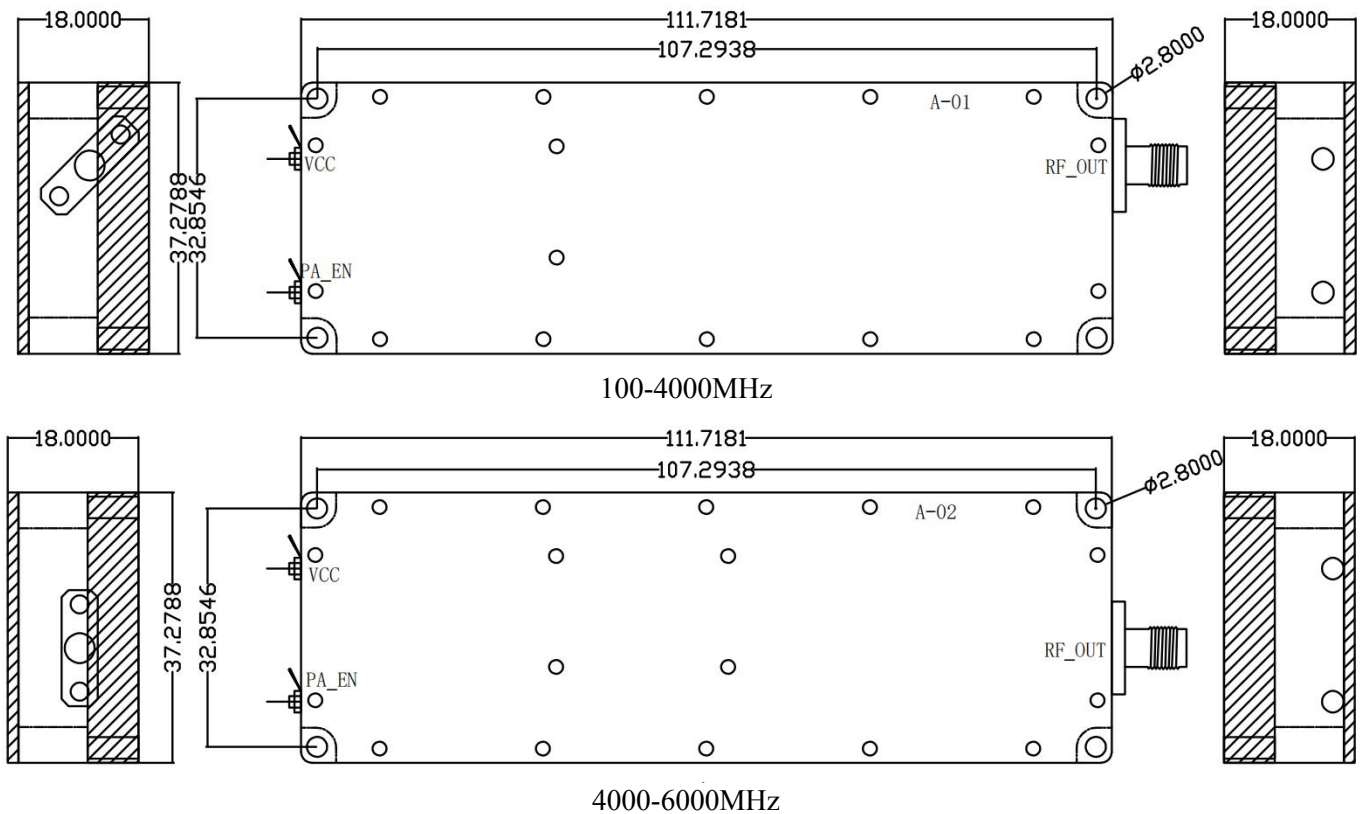
DC INTERFACE CONNECTOR – [Hybrid D-Sub 3-Pin, Male]

Pin#	Description	Specifications
1	GND	Ground
2	VDD	+28VDC
3	Enable	3.3-5V

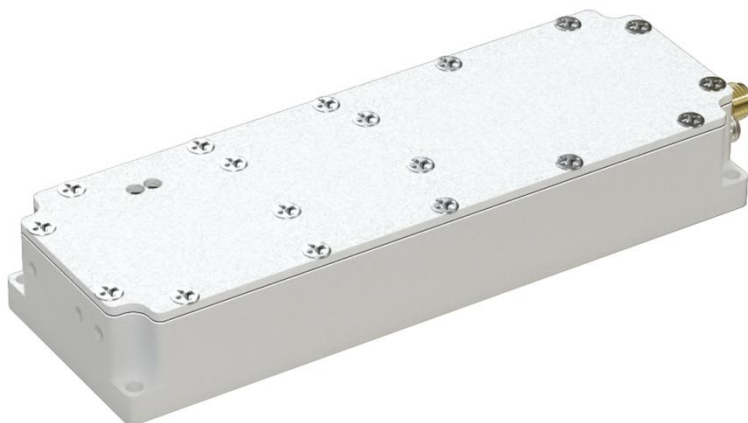
AMP1006000-50W

Outline Drawing

* Unit: mm[inch] | Tolerance ± 0.2 [.0078]



Side View[3D]



Our Corporation reserves the right to make changes to any products herein or to discontinue any product at any time without notice. While product specifications have been thoroughly examined for reliability, Our Corporation strongly recommends buyers to verify that the information they are using is accurate before ordering. Our Corporation does not assume any liability for the suitability of its products for any particular purpose, and disclaims any and all liability, including without limitation consequential or incidental damages. Our products are not intended for use in life support equipment or application where malfunction of the product can be expected to result in personal injury or death. Buyer uses or sells such products for any such unintended or unauthorized application, buyer shall indemnify, protect and hold Our Corporation and its directors, officers, stockholders, employees, representatives and distributors harmless against any and all claims arising out of such unauthorized use.